
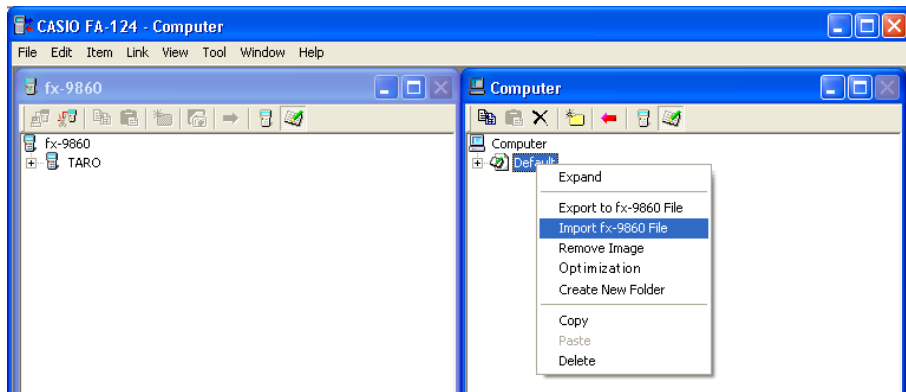
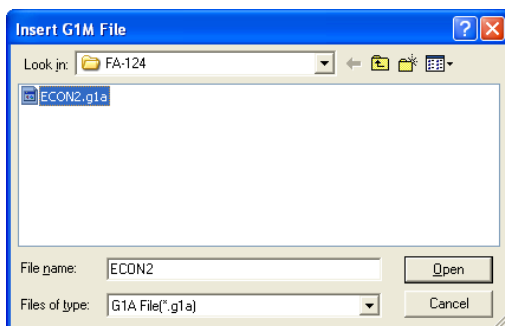


# To install E-CON2


1. Connect the fx-9860G SD/fx-9860G to your computer.
2. On the computer window, click the toolbar  button.
3. Select the flash image icon, and then right-click with your mouse.

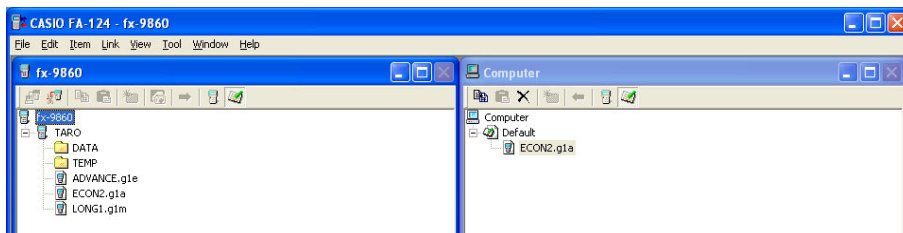


4. On the shortcut menu that appears, select [Import fx-9860 File].



5. Select the file (ECON2.g1a), and then click [Open].
  - This will cause the file to appear on the computer window.

6. Drag the file and drop it into the  [User Name] icon on the fx-9860 window.
- This will install E-CON2 on the fx-9860G SD/fx-9860G.



## To uninstall E-CON2

- You can uninstall E-CON2 by using the fx-9860G SD/fx-9860G **MEMORY** mode to delete its file.
- For details, see "12-7 MEMORY Mode" in the fx-9860G SD/fx-9860G User's Guide.